



Rushcroft Road, Brixton, SW2

4 bedroom flat to let

£840 Per Week

Furnished

Property Details

A beautiful four-bedroom flat set within a charming converted Victorian building. This sleek property comprises four generous double bedrooms with large windows, a modern open-plan kitchen/reception room, and two contemporary bathrooms, both with separate showers, one of which also features a bath.

Ideally located in the heart of Brixton, residents can enjoy easy access to a wide range of amenities including the vibrant shops and bars of Brixton Village and the iconic Ritzy Cinema. The property is perfectly suited for those needing excellent transport links, with Brixton Underground Station just a short walk away, offering quick access into central London.

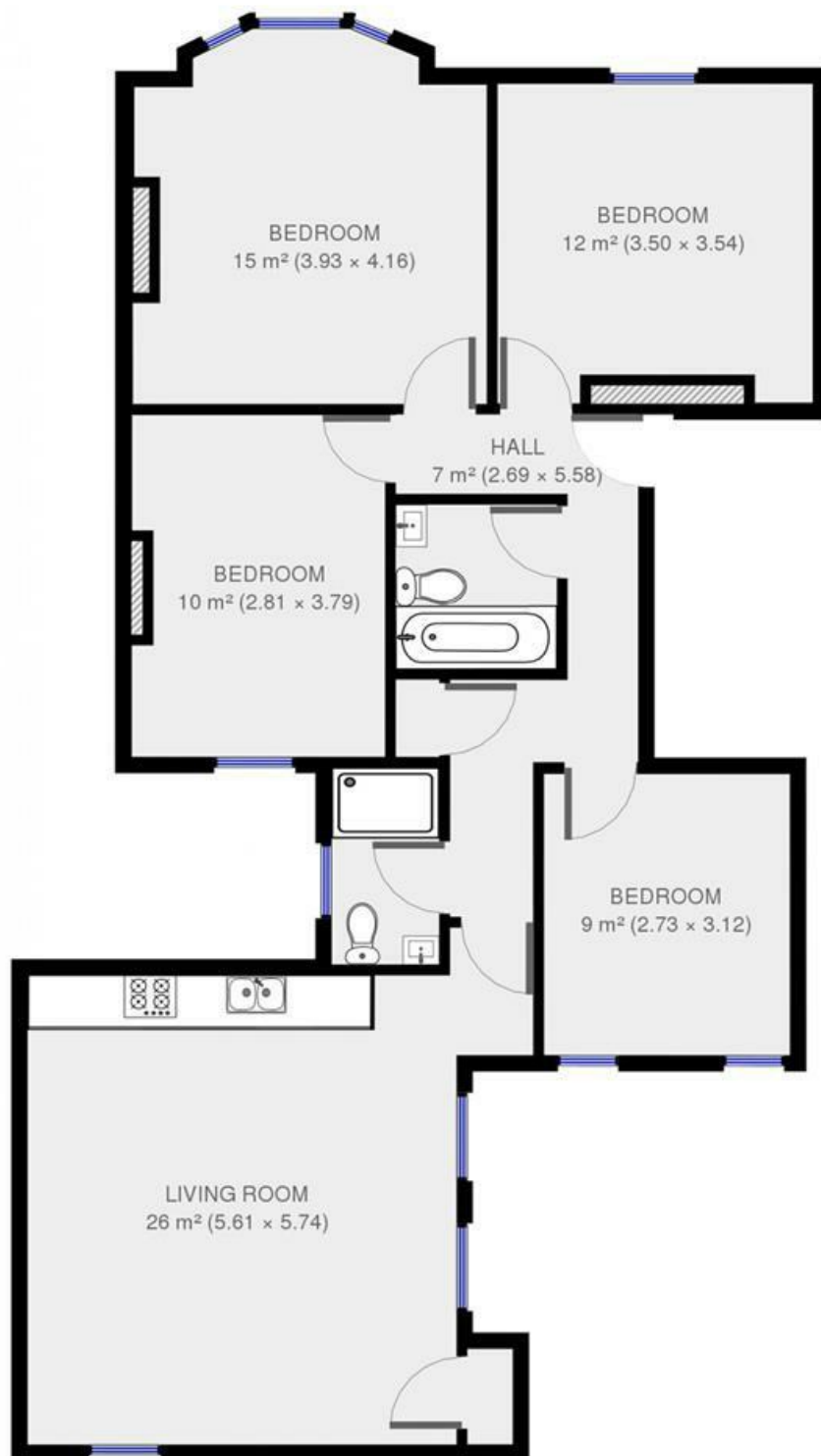
Features

- Four double bedrooms
- Close to Brixton underground station
- Open plan kitchen / reception
- 2 bathrooms
- Victorian conversion
- Bright and airy throughout

Council tax band D EPC rating B (81)



Rushcroft Road, Brixton, SW2

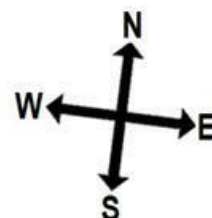


4 bed flat.

Approx internal area:

926 sqft 86 sqm

While we do try our very best, floor plans are produced as a guide only and we take no responsibility for the precise accuracy with which any property is represented



Rushcroft Road

Rushcroft Road, Brixton, SW2

